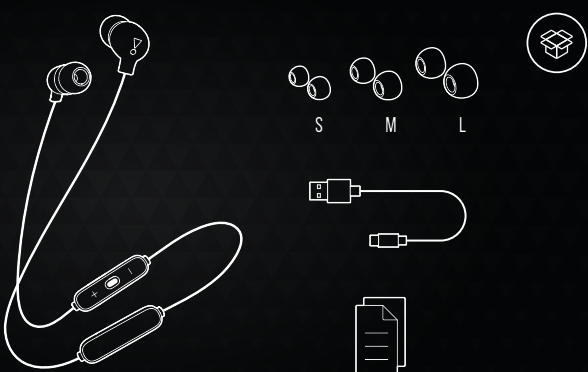


# QUICK START GUIDE

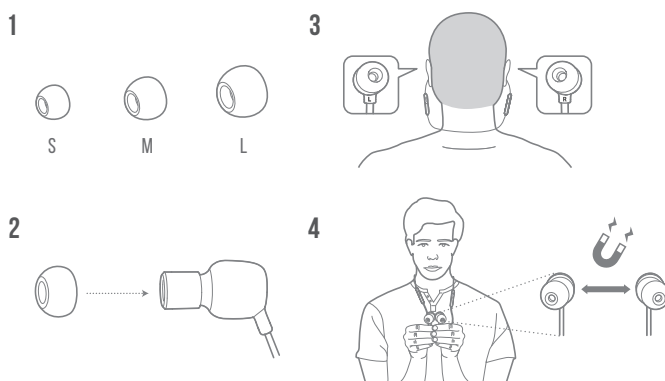
TUNE125BT



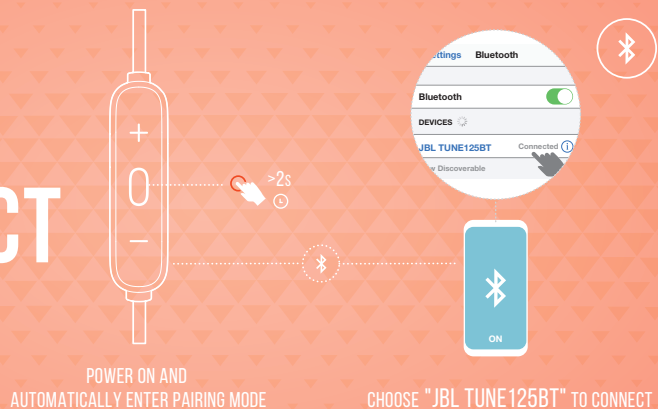
## WHAT'S IN THE BOX



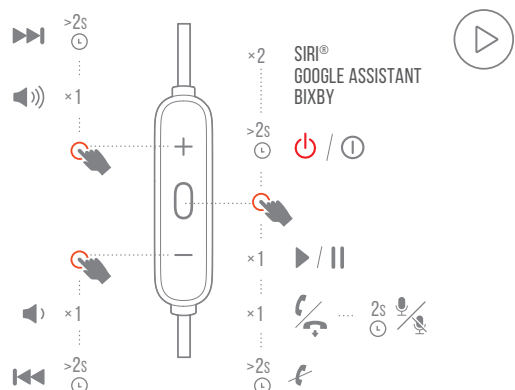
## HOW TO WEAR



## POWER ON & CONNECT



## BUTTON COMMAND

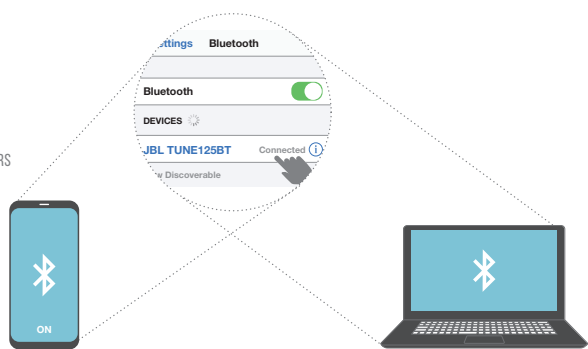


## MULTI-POINT CONNECTION

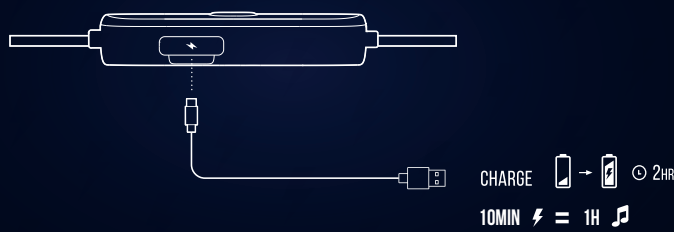
\* (MAXIMUM 2 DEVICES)

ENTER PAIRING MODE WITH THE 2<sup>ND</sup> DEVICE

- TO SWITCH MUSIC SOURCE, PAUSE THE MUSIC ON THE CURRENT DEVICE AND SELECT PLAY ON THE 2<sup>ND</sup> DEVICE.
- PHONE CALL WILL ALWAYS TAKE PRIORITY.
- IF ONE DEVICE GOES OUT OF BLUETOOTH RANGE OR POWERS OFF, YOU MAY NEED TO MANUALLY RECONNECT THE REMAINING DEVICE.
- SELECT "FORGET THIS DEVICE" ON YOUR BLUETOOTH DEVICES TO DISCONNECT MULTI-POINT.

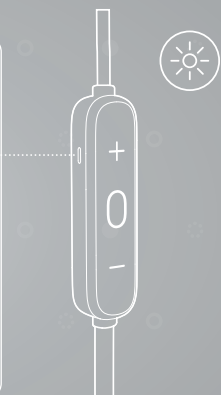


## CHARGING



## LED BEHAVIORS

★ ~2	POWER ON / OFF
•	NO DEVICE CONNECTED
★	BT CONNECTING
•	BT CONNECTED
★	LOW BATTERY
•	CHARGING
•	FULLY CHARGED



## TECH SPEC

Model:	TUNE125BT
Driver Size:	8.6 mm / 0.34" Dynamic driver
Power supply:	5V --- 1A
Weight:	18.3 g / 0.04 lbs
Headset battery type:	Lithium-ion battery (3.7V / 130 mAh)
Charging time:	< 2 hrs
Music playtime with BT on:	up to 16 hrs
Frequency response:	20 Hz – 20 kHz
Impedance:	16 ohm
Sensitivity:	95 dB SPL @1kHz 1mw
Microphone sensitivity:	-29 dBV/Pa @1kHz
Bluetooth version:	5.0
Bluetooth profile version:	HFP 1.7, A2DP 1.3, AVRCP 1.6
Bluetooth transmitter frequency range:	2.4 GHz- 2.4835 GHz
Bluetooth transmitted power:	< 6 dBm
Bluetooth transmitted modulation:	GFSK, π/4 DQPSK, 8DPSK
Maximum operation temperature:	45 °C

